

Cdc37 Antibody
Rabbit mAb
Catalog # AP90966

Specification

Cdc37 Antibody - Product Information

Application	WB, IHC, FC, IP
Primary Accession	Q16543
Reactivity	Rat
Clonality	Monoclonal
Other Names	
CC37; Hsp90 chaperone protein kinase-targeting subunit; Hsp90 co-chaperone Cdc37; p50Cdc37;	
Isotype	Rabbit IgG
Host	Rabbit
Calculated MW	44468 Da

Cdc37 Antibody - Additional Information

Dilution	WB~~1:1000 IHC~~1:100~500 FC~~1:10~50 IP~~N/A
Purification	Affinity-chromatography
Immunogen	A synthesized peptide derived from human Cdc37
Description	CDC37 is an important component of the HSP90 chaperone complex. It was initially identified for its involvement in cell-cycle progression and was later found to have a much broader role as a chaperone for a wide variety of kinases and other proteins. CDC37 protein has an amino-terminal kinase binding domain followed by a central HSP90 binding domain.
Storage Condition and Buffer	Rabbit IgG in phosphate buffered saline , pH 7.4, 150mM NaCl, 0.02% sodium azide and 50% glycerol. Store at +4°C short term. Store at -20°C long term. Avoid freeze / thaw cycle.

Cdc37 Antibody - Protein Information

Name CDC37

Synonyms CDC37A

Function

Co-chaperone that binds to numerous kinases and promotes their interaction with the Hsp90

complex, resulting in stabilization and promotion of their activity (PubMed:8666233). Inhibits HSP90AA1 ATPase activity (PubMed:23569206).

Cellular Location

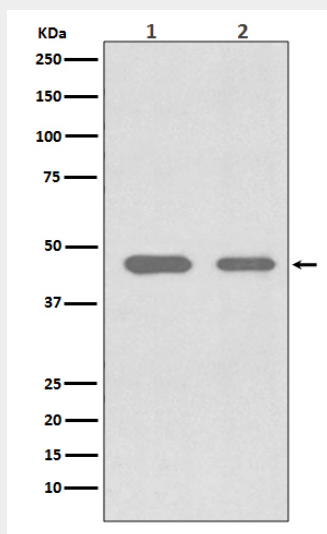
Cytoplasm.

Cdc37 Antibody - Protocols

Provided below are standard protocols that you may find useful for product applications.

- [Western Blot](#)
- [Blocking Peptides](#)
- [Dot Blot](#)
- [Immunohistochemistry](#)
- [Immunofluorescence](#)
- [Immunoprecipitation](#)
- [Flow Cytometry](#)
- [Cell Culture](#)

Cdc37 Antibody - Images



Western blot analysis of Cdc37 expression in (1) Jurkat cell lysate; (2) SW480 cell lysate.